

Astra Profile600IP

IP65 LED Moving Profile, with a 600W White source

ORDER CODE: **ASTRAPROFILE600IP**

The **Astra Profile600IP** is a bright, waterproofed (IP65) LED profile moving light, designed for any large-scale touring applications and exterior installations. Despite its waterproofed exterior, this unit is tremendous brightness and offers a superior evenness when comparing with other fixtures in the same class. Its light source delivers a pure white light emission, calibrated at 7,500K, reaching 20,500 lumens whilst achieving a flat field beam projection. The **Astra Profile600IP's** optical system moves linearly from 7° to 54°, and it's equipped with a brand-new 600W LED source. The extensive feature set of the **Astra Profile600IP** includes a 4-layer motorized framing system, linear CMY and CTO, colour and gobo wheels, two frost filters, prism, and an iris.

MAIN FEATURES

- IP65 LED Moving Profile equipped with a 600W long life LED source (7,500K)
- 7° to 54° linear zoom
- 4-layer motorized framing shutters, Linear CMY+CTO, animation wheel, gobo and colour wheels, two frost filters, prism and iris

TECHNICAL SPECIFICATION

LIGHT SOURCE

- Source:600 W White LED
- CCT:6.500 K
- Luminous flux:(7°) 14'870 lm - (60°) 22'883 lm
- Lux:(7°) 66'276 lx - (60°) 1'452 lx @5 m
- CRI:> 70 (CCT 6.000K and CRI > 90 with filter on color wheel)
- Source life expectancy: > 30.000 h

OPTICS

- Zoom:7° - 54 ° motorised linear zoom
- Lens diameter:160 mm
- Lens type: HD anti-reflection lenses with achromatic coating
- Focus: motorised

COLOUR SYSTEM

- Colour mixing: linear CMY
- CCT: linear CTO correction 2.700 K ~ 7.000 K
- Colour wheel:7 colour filters

DYNAMIC EFFECTS

- Shutter system: 4 shutter blades with position and ±30° angle adjustment, ±45° rotation of the complete framing system
- Animation wheel: animation wheel with CW and CCW rotation
- Rotating gobos:6 rotating gobos + open, interchangeable, indexing
- Gobo size:outer: 25,7 mm - image: 18 mm - thickness: 1,1 mm
- Circular prism:4 f with bi-directional rotation, indexing
- Frost: linear 0 - 100% frost filter
- Iris:5 - 100 % motorised iris

BODY

- Hardware on-board: sockets for quick-Lock Omega bracket (clamp not included)
- Pan angle:540 °
- Tilt angle:270 °
- Pan/Tilt resolution: bit 8 / 16-bit
- Feedback: automatic repositioning after accidental movement
- Body: weatherproof IP65 construction
- Body colour: black

ACCESSORIES & RELATED PRODUCTS

• 9313FXWL03	Ass. 3x2.5mm TH07 cable, 16A 3p 230V CEE plug, SETSAC3FX socket, L.3 m
• 9333FXWL03	Ass. 3x2.5mm TH07 cable, SHUKO plug, SETSAC3FX socket, L.3m
• 938225L03	3x2.5mm TH07 Cable, 16A SETSAC3MX, 16A SETSAC3FX, L. 3m
• C6002B	Slim aluminum clamp, 200kg loading, 48-51mm tubes, M10 bolt, Black
• FCLASTRAP600IP	Flight case for 2 pcs of ASTRAPROFILE600IP
• INF53415L03	Dmx cable HC5340. SETMCSMXXB XLR 5p->SETMC5FXXB XLR (f) 5p L.3m
• IPTTESTBOX	Portable vacuum and pressure tester for ProLights IP fixtures

CONTROL

- Protocols: DMX512, RDM, Art-Net, sACN, W-DMX
- DMX channels:29 / 39 / 54 channel
- Wireless Control: included, Lumen Radio Timo Fx DMX/RDM compatible with both CRMX (Lumen Radio) and W-DMX (Wireless DMX)
- RDM: RDM for remote monitoring and settings
- Display: Graphic User Interface
- Firmware upgrade: yes, via USB - DMX interface (UPBOX2) not included
- Other: 16bit control of dimmer and colour

ELECTRONICS

- Dimmer: linear 0 ~ 100% electronic dimmer
- Dimmer curves: selectable dimming modes available
- Strobe / shutter:1 - 30 Hz, electronic
- Display battery: self-charging battery backup
- Operating temperature: -10° ~ +45°
- LED Control: flicker free frequency with adjustable PWM
- Selectable PWM: 600 ~ 50.000 Hz

ELECTRICAL

- Mains power supply: 100-240V - 50/60Hz
- Max power consumption:800 W
- Output (at 230V):3 units on a single power line
- Power factor:>0,95
- Inrush current:240VAC/34.7A, 115VAC/18.4A

PHYSICAL

- IP rating:65 for temporary outdoor use (*)
- Cooling: combination of heat pipe cooling system and low noise fan
- Suspension and fixing: any position with quick-lock omega brackets
- Pan / tilt lock: for transportation and maintenance
- Signal connection: Amphenol XLR 5p IN/OUT connectors
- Data connection:Art-Net RJ45 IN/OUT
- Power connection: Seetronic powerCON TRUE IP65 IN/OUT
- Dimensions (WxHxD):454x730x310 mm
- Weight:45 kg

(*) NOTE: Suitable for permanent outdoor use, provided installation and maintenance cycles by qualified technicians are carried.

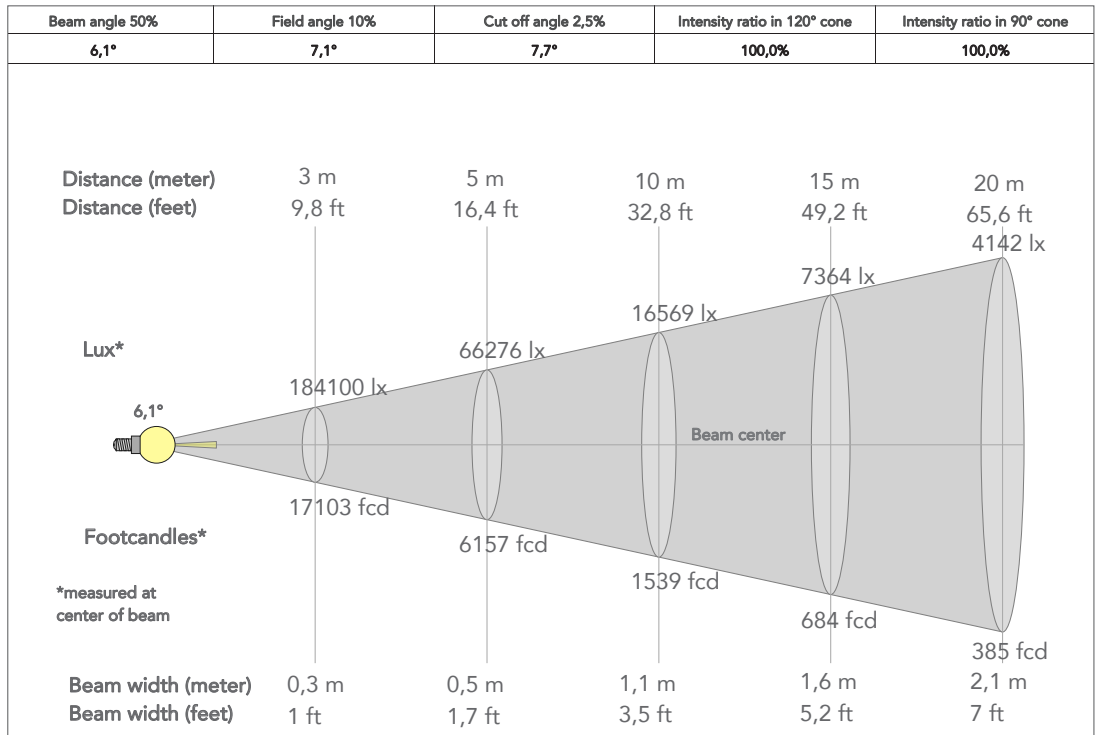
CERTIFICATIONS / APPROVALS

- Certifications / Approvals: CE, UKCA, RCM

• OSIP	IP65 quick-lock omega bracket compatible with IP65 moving heads
• RSR0670B	Steel security cable for hanging bodies, inox steel shackle, L=60 cm, black
• UPBOX2	Firmware uploader kit, USB IN, 3-pin XLR DMX OUT
• WSBBF1G5	BlackBox F-1 G5 transmitter, 2,45GHz & 5.2/5,8 GHz, DMX/RDM, 512Ch
• WSBBF1G6	BlackBox F-1 G6 transrec, 512ch, 2.45GHz, DMX&RDM,Bluetooth,G3,G4,G4S, G5, CRMX
• WSBBR512G5	BlackBox R-512 G5 receiver 512Ch, 2.45GHz & 5.8GHz, DMX/RDM optional
• WSBBR512G6	BlackBox R-512 G6 receiver 512Ch, 2.45GHz,DMX&RDM,Bluetooth,G3,G4,G4S,G5,CRMX

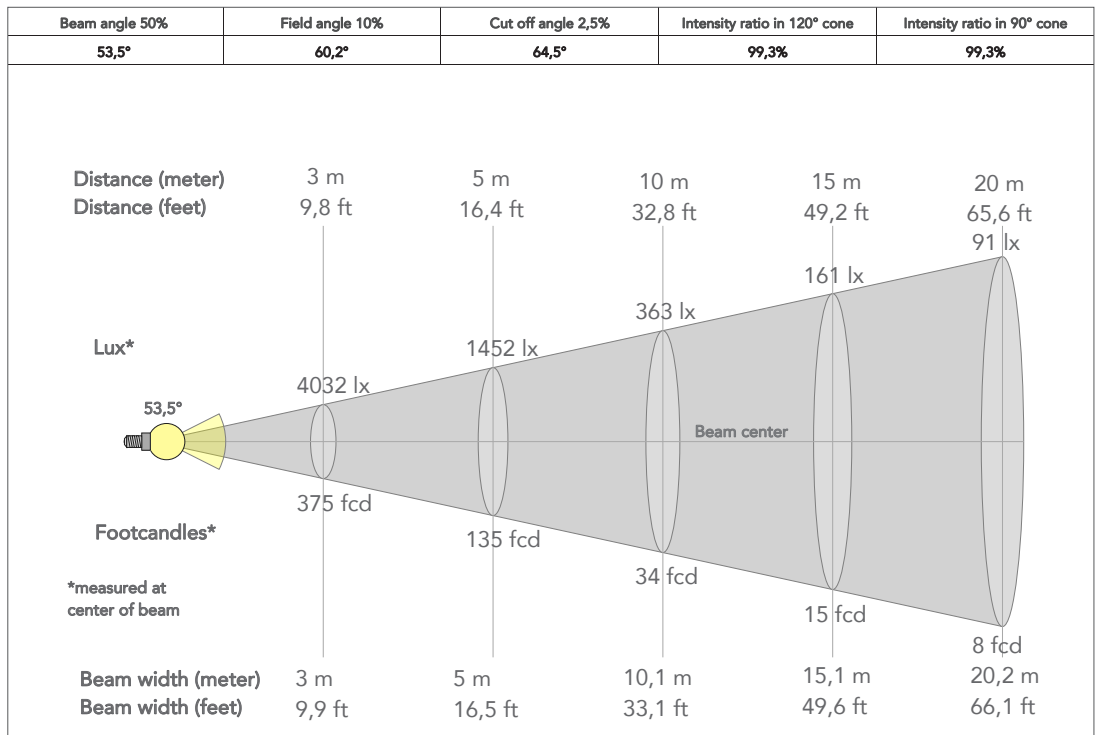
PRESET FULL ON

Beam angle 50%: 7°

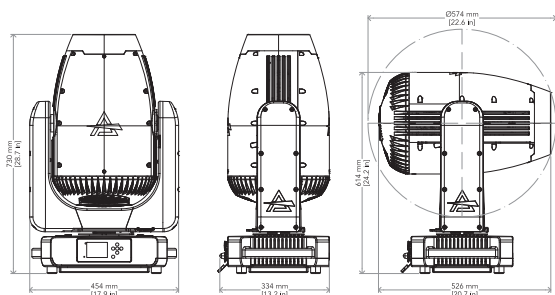


PRESET FULL ON

Beam angle 50%: 60°



TECHICAL DRAWINGS



CERTIFICATIONS / APPROVALS

Visit our website for specifications and tech documentations

